



CHANGING STATIONS FOR A CHANGING WORLD®



STRONG, VERSATILE, BEAUTIFUL, AND COMPLIANT.  
*THE CHOICE IS CLEAR.*



# CHANGING STATIONS FOR A CHANGING WORLD<sup>®</sup>





CHANGING STATIONS FOR A CHANGING WORLD.™



## PUBLIC WASHROOM

Foundations® baby changing stations offer the best overall value and the widest product selection to accommodate every budget and design objective in public restrooms.

Foundations® changing stations are frequently specified by architects because of their safety, durability, and versatility. All Foundations® changing stations are strong, beautiful, functional, and compliant. Regardless of the type of public facility, Foundations® has the perfect changing station solution for you.



Ultra® 200 Series ..... 4-5



Classic 100 Series ..... 6-7



Elements 300 Series ..... 8-9



Stainless ..... 10-11



Premier Stainless ..... 12



Extended Changing Stations ..... 13



Accessories ..... 14-15



# ULTRA<sup>®</sup> THE ULTIMATE CHANGING



## ULTRA<sup>®</sup> CHANGING STATION



200-EH-01    200-EH-02    200-EH-03    200-EH-04    200-EH-08

Available in 5 stylish colors: Gray & Stainless (200-EH-01), Black & Stainless (200-EH-02), White Granite & Stainless (200-EH-03), Metallic & Black (200-EH-04), Classic Cream & Stainless (200-EH-08). Available in surface-mount only.

37.5"W x 21"H • 4"D (closed) 37.5"W x 16.5"H • 21"D (open)



EZ Mount™ backer plate makes installation quick & easy, true one-person installation



Steel-to-steel hinges for added strength and longevity



Smooth nylon belt with thermoplastic polyurethane coating. Easy to sanitize and adjustable with one hand



Large dual lockable built-in liner dispensers extends maintenance interval and prevents vandalism



Dual bag hooks easily accommodate thick diaper bags



Patent Pending



Contains no  
Triclosan or other  
added chemicals



Made in the USA

## ULTRA® BEAUTY & DESIGN

- Upscale, subtle design fits any architectural environment and complements any décor
- Timeless and identifiable international logo
- Clean and sophisticated door sign matches any interior décor

## ULTRA® STRENGTH & DURABILITY

- Strong steel-to-steel hinges fasten directly to wall for added strength and longevity
- Exclusive EZ Mount™ backer plate for unprecedented support
- Thick polyethylene build with a textured exterior surface helps prevent abrasion

## ULTRA® QUICK & EASY INSTALLATION

- Exclusive Foundations® EZ Mount™ Backer Plate makes unit quick and efficient to install
- True one-person installation
- Includes all mounting hardware regardless of substrate being mounted to
- Safety belt can be easily removed and replaced if needed

## ULTRA® HYGIENE & MAINTENANCE

- Naturally bacteria resistant polyethylene changing surface does not contain harmful anti-bacterial chemicals
- Easy-to-clean smooth interior limits areas for bacteria build-up
- Smooth nylon belt with thermoplastic polyurethane coating. Easy to sanitize and adjustable with one hand
- Lockable liner cavities minimize refills and potential vandalism

## ULTRA® COMFORT & EASE OF USE

- Extra-wide and deep changing surface more safely accommodates baby
- Gas spring mechanism ensures smooth open and close of the unit
- Dual liner cavities with smooth inserts for quick access
- Prominent, dual bag hooks easily accommodate thick diaper bag straps

## ULTRA® COMPLIANCE & SAFETY

- Meets all global standards (ASTM and EN)
- Warning label in 24 languages and instruction sheets use pictures for global use
- ADA compliant when properly installed
- 5-year limited warranty

## BACTERIA & MOLD RESISTANT

Foundations® brand commercial changing stations are made of inherently bacteria resistant polyethylene without the addition of antimicrobial chemicals. ASTM G21-I5 testing confirms that the polyethylene surface does not provide a viable surface for fungal growth. Foundations believes all children's products should be as pure as possible. Therefore, Foundations does not add Triclosan or any other commercially available antimicrobial chemical to the surface of its baby changing stations.



## HORIZONTAL 100-EH // 5210089 // 100-EH-02

Our best selling changing station and is an industry standard as the most preferred changing position. Available in Light Gray (100-EH), Cream (5210089), and Black (100-EH-02).  
**34.25"W x 15.375"H • 4"D (closed) 17.5"D (open)**

### ALSO AVAILABLE WITH BACKER-PLATE

Horizontal Light Gray: 100-EH-BP; Horizontal Black: 100-EH-BP-02; Vertical Light Gray: 100-EV-BP.



\*Supports up to  
150 pounds.

## VERTICAL 100-EV

Offering a more narrow footprint, the vertical model allows for mounting in smaller spaces.  
**19.5"W x 30.5"H • 4"D (closed) 32"D (open)**

# Classic THE ORIGINAL 100-SERIES

Great value, style, and function

Made from durable, easy-to-clean, high-density polyethylene, which is inherently bacteria resistant

Industry standard for the most preferred changing position

Clean design fits virtually all decor

Built-In Liner Dispensers

5-year warranty

All models are ADA compliant when properly installed

Integrated Coat/Bag Hook



Horizontal unit only



Made in the USA

Safety Strap and Buckle

Includes all necessary mounting hardware (EZ Mount™ Backer Plate optional)

Heavy-duty steel-on-steel hinge provides increased strength and support



## HORIZONTAL WITH STAINLESS FRAME 5240259

Combines the 100-EH polyethylene horizontal changing station with stainless steel housing to deliver upscale appearance for high-finish facilities. Offers all the same features as 100-EH. Recessed mount only.

38.25"W x 22"H • 4"D (closed) 17.6"D (open)



## CHANGING TABLE WITH LINER DISPENSER

300-EHLD-01: Gray changing table w/ liner dispenser

300-EHLD-02: Black changing table w/ liner dispenser

*Changing table: 33.8"W x 21"H | 3.95"D (closed) 21"D (open)*

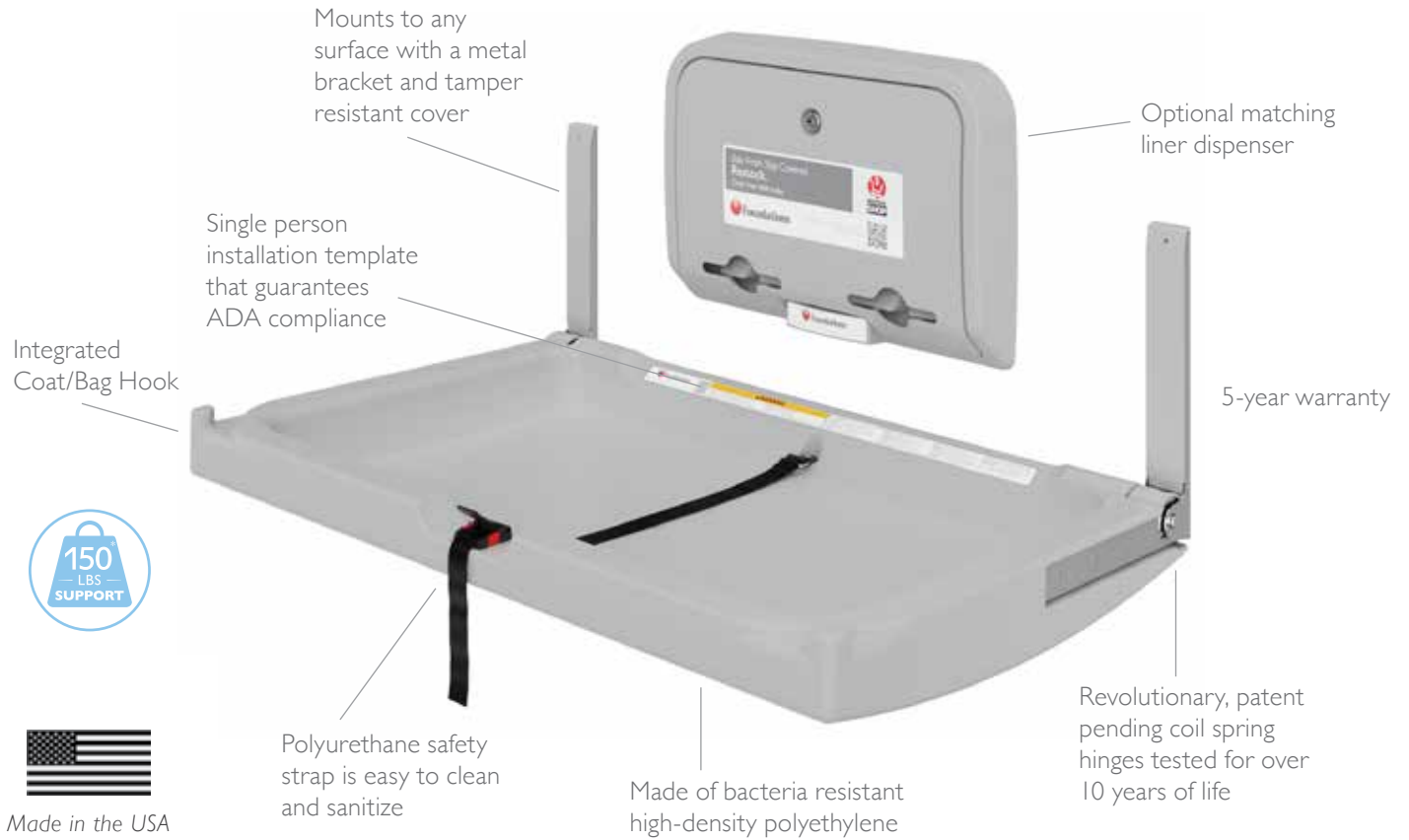
*Liner dispenser: 17.8"W x 12.3"W | 2.4"D*





# Elements THE 300-SERIES

Innovative design, exceptional value



## LINER DISPENSER

300-LD-01: Gray liner dispenser  
300-LD-02: Black liner dispenser  
17.8"W x 12.3"W | 2.4"D



## CHANGING TABLE

300-EH-01: Gray changing table only  
300-EH-02: Black changing table only  
33.8"W x 21"H | 3.95"D (closed) 21"D (open)



## FRAMELESS SURFACE-MOUNT 5410339

Combines the 100-EH polyethylene horizontal changing station with a brushed 304 stainless steel shell to deliver upscale appearance for high-finish facilities. Offers all the same features as 100-EH. Surface mount only.  
 34.6"W x 15.625"H • 3.875"D (closed) 17"D (open)

# Stainless

## The consistent beauty of stainless steel

Reinforced corner pieces eliminate sharp edges

Includes all necessary mounting hardware (optional EZ Mount™ Backer Plate compatible with frameless version only)

ADA compliant when properly installed

Stainless steel frame (optional)

5-year warranty



Made in the USA

Heavy-duty steel-on-steel hinge provides increased strength and support

304 stainless steel shell



**FRAMED SURFACE-MOUNT** I00SSC-SM

**FRAMED RECESSED** I00SSC-R

Offers all the same features as 5410339 along with stainless steel frame. Available in Framed Surface-Mount (I00SSC-SM) and Framed Recessed (I00SSC-R) versions.

37.5"W x 21.75"H • 4"D (closed) 17.1875"D (open)

# Premier Stainless

When your interior makes a statement

Entire structure is made of 304 brushed stainless steel

Bacteria resistant, replaceable, high-gloss, durable ABS tray

5-year warranty

Pneumatic gas springs



Horizontal unit only



Made in the USA



ADA and ANSI compliant when properly installed

Cushioned safety corners



\*Supports up to 150 pounds.

## HORIZONTAL SURFACE MOUNT I00SS-SM

### HORIZONTAL RECESSED I00SS-R

The only fully stainless steel fabricated changing station line available on the market today. Available in Surface Mount (I00SS-SM) and Recessed (I00SS-R) versions.

35.75"W x 23.5"H • 4"D (closed) 21.375"D (open)

## VERTICAL SURFACE-MOUNT I00SSV-SM

### VERTICAL RECESSED I00SSV-R

Allows for mounting in smaller spaces. Available in Surface Mount (I00SSV-SM) and Recessed (I00SSV-R) options.

23.5"W x 35.75"H • 4"D (closed) 33.875"D (open)



# Extended Changing Stations

The thoughtful solution for those with special needs

Designed for anyone under 4' 6",  
with an extended length of over 62"

When closed, unit projects 1" (25 mm)  
from wall if recessed or 4" (100 mm) if  
surface mounted

Constructed of heavy-duty  
304 brushed stainless

ADA and ANSI  
compliant when  
properly installed



Made in the USA

Rated to support a static load of  
400 pounds. (181 kg). Dual  
pneumatic gas springs

Surface Mount for 100-SSE:  
The tray protrudes 21.375" from  
the wall when open

Recessed Mount for 100-SSE:  
The tray protrudes 17.75" from  
the wall when open



## EXTENDED LENGTH SURFACE MOUNT 100SSE-SM

## EXTENDED LENGTH RECESSED 100SSE-R

An extended changing table is a convenient and safe way for caretakers to assist individuals who may be unable to fully care for themselves. This changing station is made of an extremely durable brushed stainless steel, which makes it simple to maintain and easy to sanitize. We also offer the option of a recessed (100SSE-R) or surface mounted (100SSE-SM) station depending on what best fits your facility. Complies with Accessibility for Ontarians with Disabilities Act in Canada.

64.75"W x 23.5"H • 4"D (closed) 21.375"D (open)

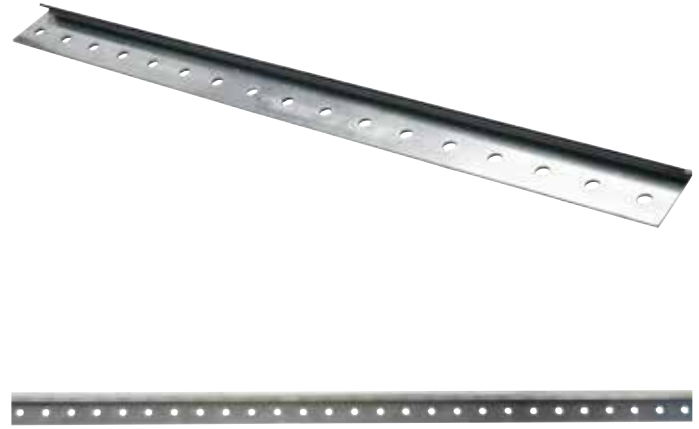
# Accessories



## TODDLER SEAT 5806086

12"W x 15.5"H • 4"D (closed) 13.5"D (open)

- Made from durable, easy-to-clean, high-density polyethylene, which is inherently bacteria resistant
- Required mounting surface 12"W x 16.625"H
- Seat extends 13.5" from wall when open
- Weight capacity 50 lbs
- Made in the USA



## EZ MOUNT™ BACK PLATE A100-BPEH // A100-BPEV

37.5"L x 1.15"H x 2"D (horizontal), 29"L x 1.15"H x 2"D (vertical)

- Eliminates the need for structural blocking and ensures connection with two studs
- Easy assembly includes all necessary tools
- Reduces installation time and enables unit to be attached to the wall by one installer



## CHANGING STATION BELT B003

## WALL SEAT BELT B008

Replacement belt to safely secure children in place while in changing station or wall seat.



## SHOCK REPLACEMENT KIT

C003-CYL // C006-CYL // C007-CYL

Replacement cylinder kit with shock mechanism that controls the safe opening and closing of Foundations changing stations.

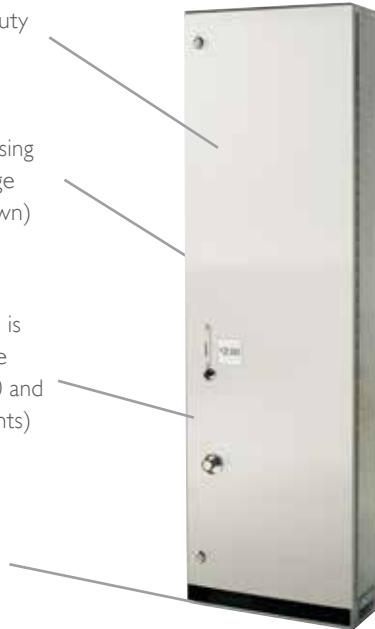
# Accessories

Constructed of heavy-duty 304 brushed stainless

Can recess up to 3.75" using optional recessing flange Model 025-SS (not shown)

Holds 24 diaper kits and is preset at \$2.00 per sale (can be set at 50¢–\$3.00 and adjusted in 25¢ increments)

Keyed lock prevents tampering and theft



## DIAPER VENDOR 106-SS

12.25"W x 42"H x 5.25"D

- Made in the USA

Constructed of heavy-duty 304 brushed stainless

Recessed mounted separately from changing station

Keyed lock prevents tampering and theft

Holds 100 liners



## LINER DISPENSER 200-SSLD

8"W x 16"H x 4"D

- Made in the USA



## DIAPER KITS 107-DK

Kit includes wipes, liners, medium diaper; diaper cream and disposal bag. Fits 106-SS. 80 per case pack.



## LINERS 036-NWL // 036-LCR

Keep your changing stations sanitary with these disposable liners. Available as waterproof and non-waterproof. 500 per case pack.  
13"W x 19"H

Foundations® is the global leader in commercial children's furnishing in child care centers, hotels and public washrooms where safety, quality and convenience are paramount.

**Visit [Foundations.com](https://foundations.com) or call  
Customer Service at 330.722.5033**

**Corporate Sales Manager  
+1.330.722.5033 ext.136**



Scan to view all public washroom product, or visit  
[foundations.com/public-washroom-products](https://foundations.com/public-washroom-products)



CHANGING STATIONS FOR A CHANGING WORLD.™